

PLACES AND SPACES

Places and spaces include open spaces, plazas, foyers, streets, lanes and through site links.

The physical attributes of public places and spaces (e.g. scale, definition, proportion) will effect attractiveness and therefore the level of activity. Activity provides safety through the phenomenon of passive surveillance.

Public places and spaces which may meet the requirements of many of the guidelines may fail to be safe if they are not attractive to people and do not achieve the benefits of activity.

If people can easily understand a space they are more able to take command of their own safety.

OBJECTIVE

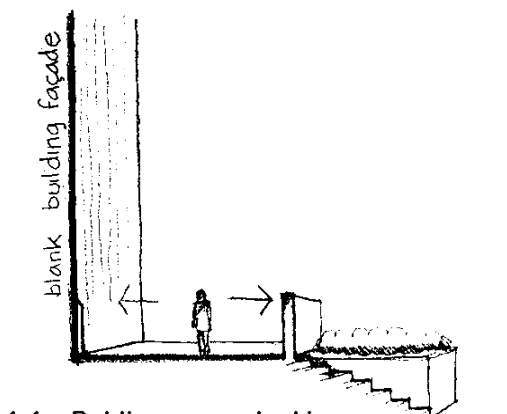
To provide public places, facilities and spaces that are in their physical attributes attractive to people and thereby promote activity.

GUIDELINES

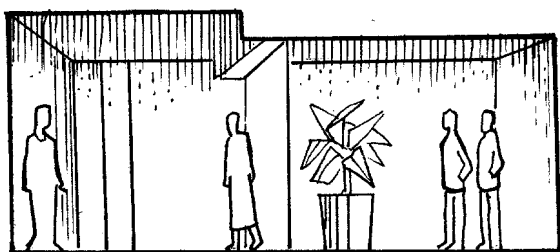
1. General

1.1 The design of public spaces and places should:

- include attractive materials and finishes and avoid austerity;
- include variety of design and avoid sterility;
- Include landscape design features;
- Include attractive lighting (see lighting design guidelines);
- allow sun penetration;
- include screening from wind.



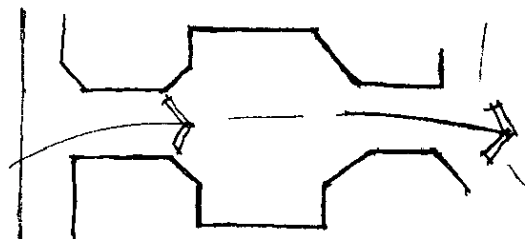
1.1a Public spaces lacking proportion and with limited sight lines.



1.1b Public spaces should not lack proportion and limit sightlines



- 1.2 The design of public places and spaces should be:
- physically well defined and visually permeable;
 - designed with a sense of order and proportion;
 - have human scale;
 - avoid a multiplicity of entrances and exits.



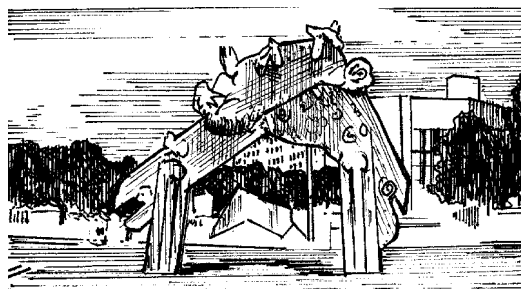
1.2 Avoid a multiplicity of entrances and exits

- 1.3 Spaces should be designed so that from the majority of points within the space a user of the space could clearly see for a distance of 15m to identify a threat.



1.3 Attractive public places

- 1.4 Design features which are expressive of public entry and use should be considered.

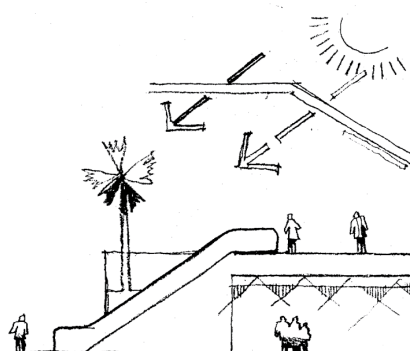


1.4 Design features marking public entry

- 1.5 The proportions of width, length and height all need to be considered in creating attractive design of spaces.

2. Within buildings

- 2.1 In the design of public spaces within buildings or within the perimeter of buildings particular attention should be given to the height within the space and high light levels from above to create a perception of spaciousness.



2.1 Internal public spaces to allow sufficient ceiling height & high light levels

