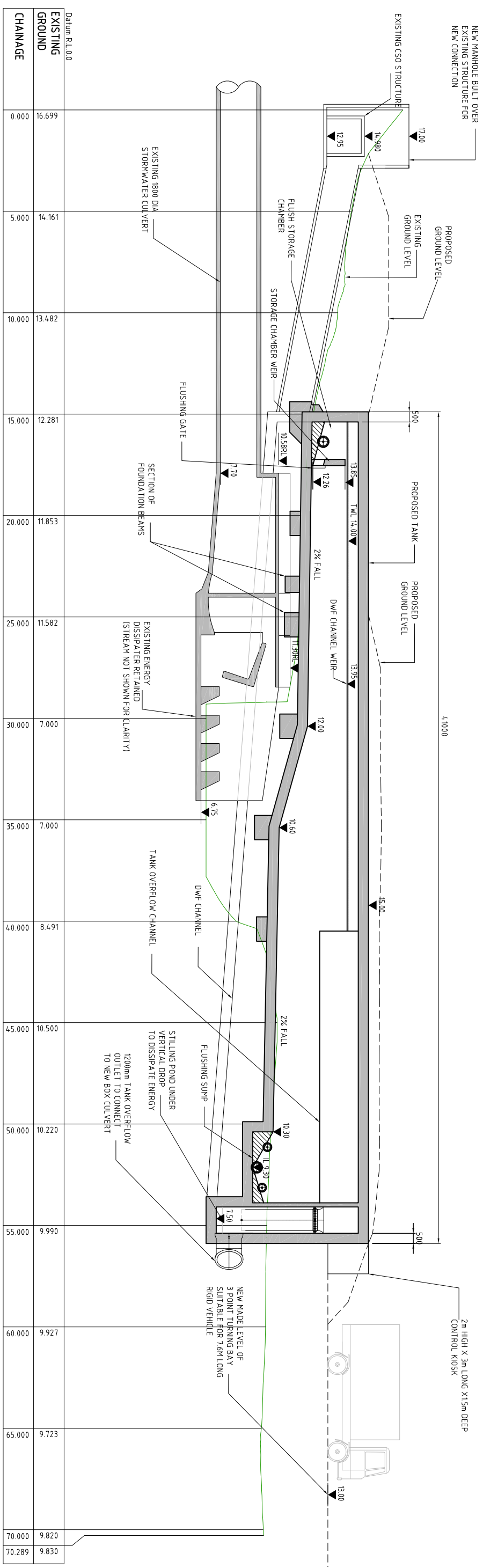


- NOTE:**
1. TANK PROXIMITY TO EXISTING ENERGY DISSIPATER TO BE CONFIRMED BY SCALE LABORATORY TESTING AT UNIVERSITY OF AUCKLAND.
 2. PILES AND COLUMNS OMITTED FOR CLARITY
 3. FOUNDATION BEAMS TO SUPPORT TANK OVER EXISTING ENERGY DISSIPATER BETWEEN PILES



SECTION 01
1:200 (A3)

PRELIMINARY

SKM No.	2005317-101.dwg	DATE PLOTTED	13 February 2009
ISSUE	DATE	BY	APPD.
1	9/12/08	PJG	AW
PRELIMINARY DESIGN AMENDMENT			
DESIGNED	DES. CHECKED	DRAWN	DWG. CHECKED
ABC	AW	PJG	AW
PROJECT LEADER			
BY	DATE	SIGNATURE-1	SIGNATURE-2
AW	9/12/08	[Signature]	[Signature]
BY	DATE	SIGNATURE-3	SIGNATURE-4
AW	9/12/08	[Signature]	[Signature]
<p>COPYRIGHT</p> <p>This drawing, the design and concept, remain the exclusive property of Watercare Services Limited and may not be used without approval. Copyright reserved.</p>			
<p>waterCare services limited</p>		<p>Branch 3 Overflow Mitigation Newmarket Gully CSO Storage Tank LONG SECTION</p>	
<p>SKM 25 Tairā St, PO Box 9806 Newmarket, Auckland Tel: +64 9 913 9800 Fax: +64 9 913 9801</p>		<p>CAD FILE: 2005317.101 ORIGINAL SCALE: A1 DATE: 9.12.2008</p>	
<p>DRAWING No. 2005317.002</p>		<p>CONTRACT No. - ISSUE 1</p>	