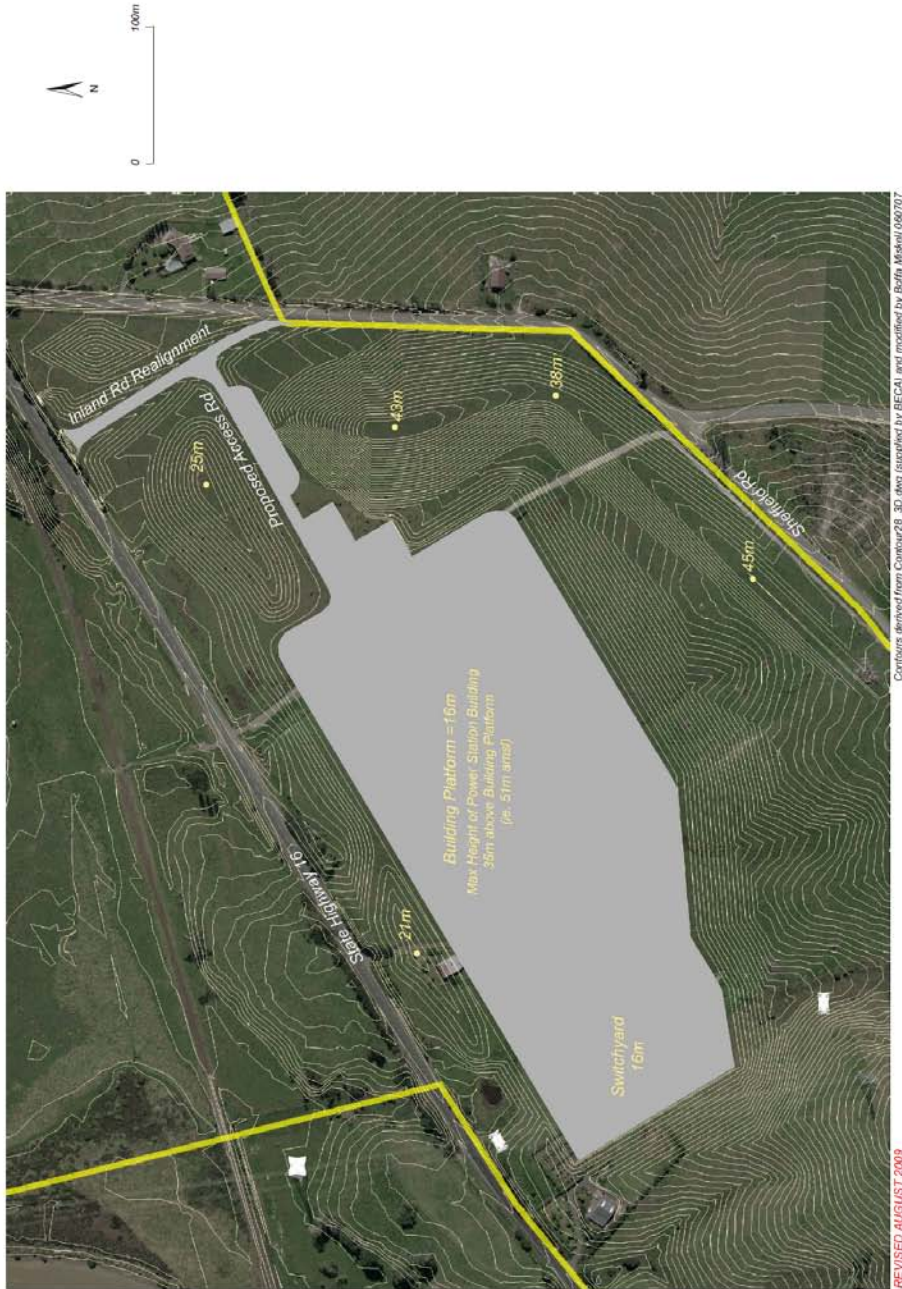




APPENDIX 12AC(i)

SPECIAL 27 – RODNEY THERMAL ENERGY GENERATION RURAL ZONE Landscape Concept Plan



REVISED AUGUST 2009

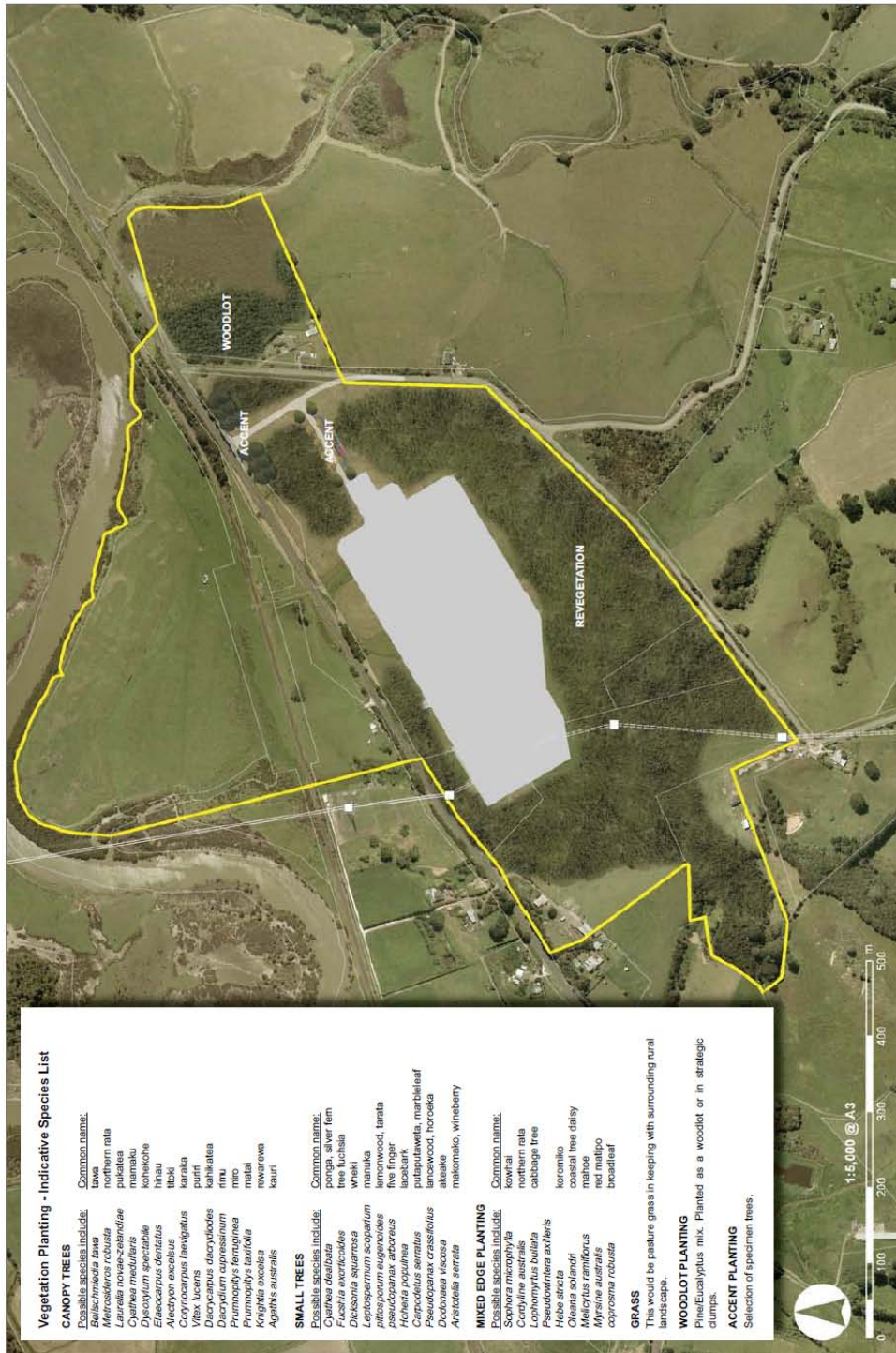
RODNEY POWER STATION
Proposed Landforms and Contours





APPENDIX 12AC(ii)

SPECIAL 27 –RODNEY THERMAL ENERGY GENERATION RURAL ZONE Landscape Concept Plan



Vegetation Planting - Indicative Species List

CANOPY TREES

- Possible species include:
- Bellschmidia lina*
 - Metrosideros robusta*
 - Laurelia novaezealandiae*
 - Cyathea medullaris*
 - Podocarpus nivalis*
 - Eleocharis dentatus*
 - Alseodaphnophyllum*
 - Corynocarpus laevigatus*
 - Viola lucens*
 - Diarycarpus diacrydoides*
 - Dacrydium cupressinum*
 - Podocarpus hallii*
 - Fraxinobrya tarbiloba*
 - Kinghilla excelsa*
 - Agathis australis*

SMALL TREES

- Possible species include:
- Cyathea dealbata*
 - Fuchsia exorticoles*
 - Podocarpus nivalis*
 - Leptospermum scoparium*
 - Pitcairium eugenioides*
 - Pseudopanax arboreus*
 - Hohentia populinea*
 - Podocarpus serratius*
 - Pseudopanax crassifolius*
 - Chorizanthe*
 - Arctostaphylos serrata*

MIXED EDGE PLANTING

- Possible species include:
- Sophora microphylla*
 - Cordyline australis*
 - Leptospermum scoparium*
 - Hebe stricta*
 - Olearia solaniflora*
 - Melicope ramiflora*
 - Myrsine australis*
 - Corynosma robusta*

GRASS
This would be pasture grass in keeping with surrounding rural landscape.

WOODLOT PLANTING
Pinus taeda mix. Planted as a woodlot or in strategic clumps.

ACCENT PLANTING
Selection of specimen trees.



1:5,000 @ A3



REVISED OCTOBER 2008
RODNEY POWER STATION
Vegetation Planting