

Area Profiles: CBD

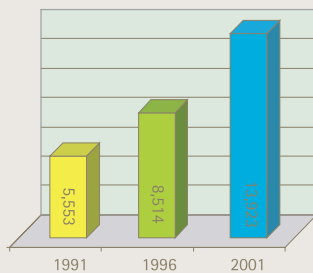


The 6 census area units (CAU) of CBD cover a wider community than just the central business district (the "area of change").

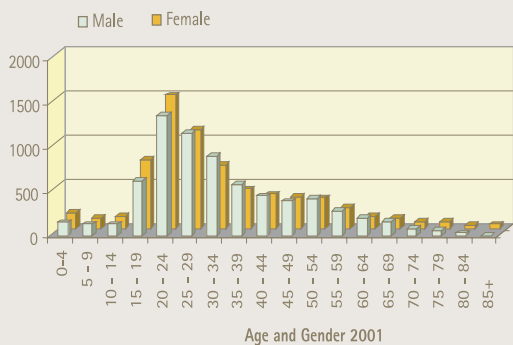
Relative to Auckland City, CBD has:

- High median household income
- Fewer Pacific Islander residents
- 6% of people with no qualification, compared with 15% in Auckland City.
- 48% of people gainfully employed as full time, compared with 47% in Auckland City.
- The average household size was 2 people, compared with 2.7 for Auckland City.
- There were 5754 households in CBD, of which 372 were in the household composition category of "couple with children" and 2118 were "one person household".
- The unemployment rate was 6%, compared with Auckland City's 5%.

Population and growth since 1991

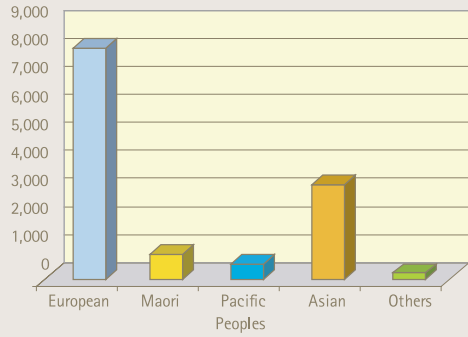


	1991	1996	2001
Freemans Bay	3360	3675	3735
Auckland Harbourside	78	171	1521
Auckland Central West	591	1815	3258
Auckland Central East	807	1821	3528
Newton	237	453	840
Grafton West	480	579	1041
Total	5553	8514	13923



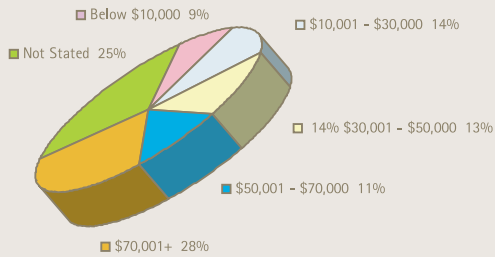
	male	female	total
0-4	153	168	318
5 to 9	132	108	234
10-14	132	132	258
15-19	627	774	1398
20 - 24	1362	1509	2865
25-29	1161	1122	2274
30-34	900	723	1620
35-39	576	447	1020
40-44	453	384	843
45-49	390	354	747
50-54	423	345	762
55-59	288	240	531
60-64	207	135	345
65-69	156	108	258
70-74	87	72	168
75-79	66	75	138
80-84	33	36	69
85+	9	42	57

Ethnic Group, 2001



	2001	%
European	8277	32
Maori	873	3
Pacific People	561	2
Asian	3357	13
Others	216	1
Total people specify one or more Ethnic Group(s)	12438	49
Total People	13917	100

Total Household Income, 2001



Household income	Number
Loss	39
Zero Income	162
\$1 - \$5000	183
\$5000 - \$10,000	153
\$10,001 - \$15,000	270
\$15,001 - \$20,000	180
\$20,001 - \$25,000	177
\$25,001 - \$30,000	207
\$30,001 - \$40,000	375
\$40,001 - \$50,000	393
\$50,001 - \$70,000	621
\$70,001 - \$100,000	534
\$100,000 or More	1047
Not Stated	1419
Total	5760

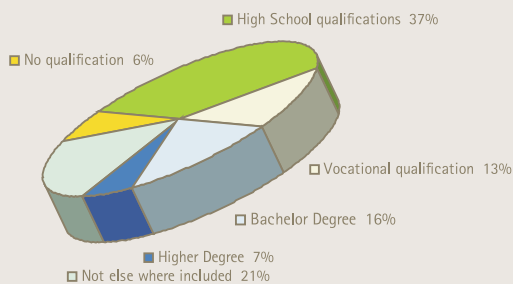
Median HH income - AU (\$)
 Freemans Bay 64490
 Auckland Harbourside 80424
 Auckland Central West 41410
 Auckland Central East 37500
 Newton 62826
 Grafton West 41062

Median household income
 Auckland City: \$51,094

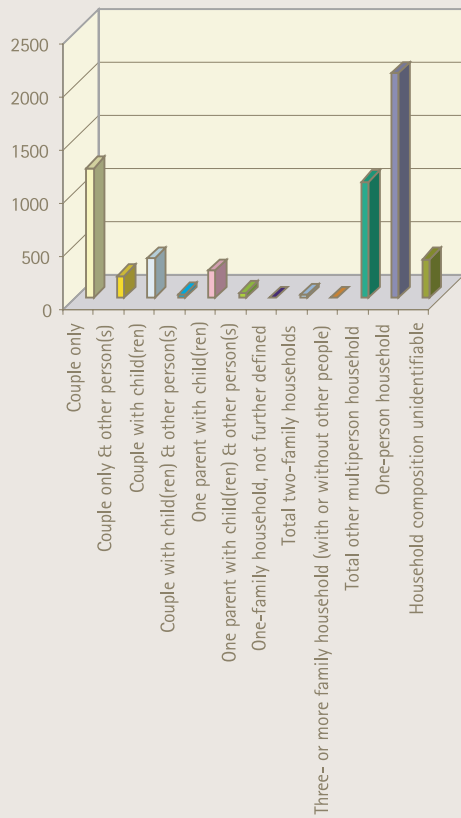
Median household income
 Auckland Region: \$48,997

Median household income
 New Zealand: \$39,588

Highest Qualification, Aged 15 Years and Over, 2001

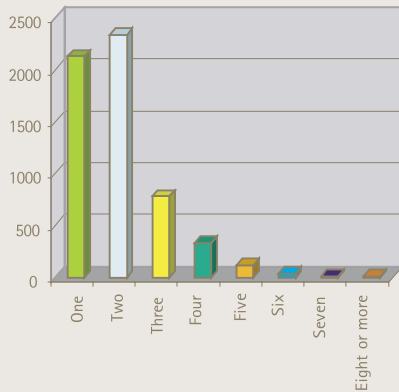


CBD	Number
No Qualification	786
Fifth form qualification	717
Sixth form qualification	1044
Higher School qualification	1764
Other Secondary school qualification	1395
Vocational Qualification	1686
Bachelor Degree	2094
Higher Degree	924
Not else where included	2703
Total	13113



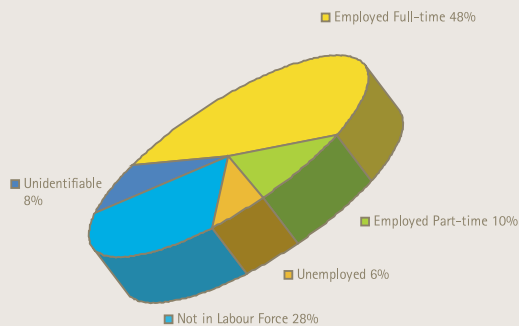
Household Composition, 2001

Couple only	1218
Couple only & other person(s)	204
Couple with child(ren)	372
Couple with child(ren) & other person(s)	36
One parent with child(ren)	258
One parent with child(ren) & other person(s)	48
One-family household, not further defined	0
Total two-family households	30
Three- or more family household (with or without other people)	0
Total other multiperson household	1092
One-person household	2118
Household composition unidentifiable	366
Total	5752



Dwelling Type and Number of Usual Residents in Household, for Households in Private Occupied Dwellings, 2001

One per house	2130
Two per house	2343
Three per house	780
Four per house	333
Five per house	120
Six per house	39
Seven per house	15
Eight or more per house	12
Total	5772



Work and Labour Force Status, Aged 15 Years and Over, 2001

Labour Force	Number	% of Total
Employed Full-time	6264	48
Employed Part-time	1263	10
Unemployed	753	6
Not in Labour Force	3732	28
Unidentifiable	1089	8
Total	13101	100