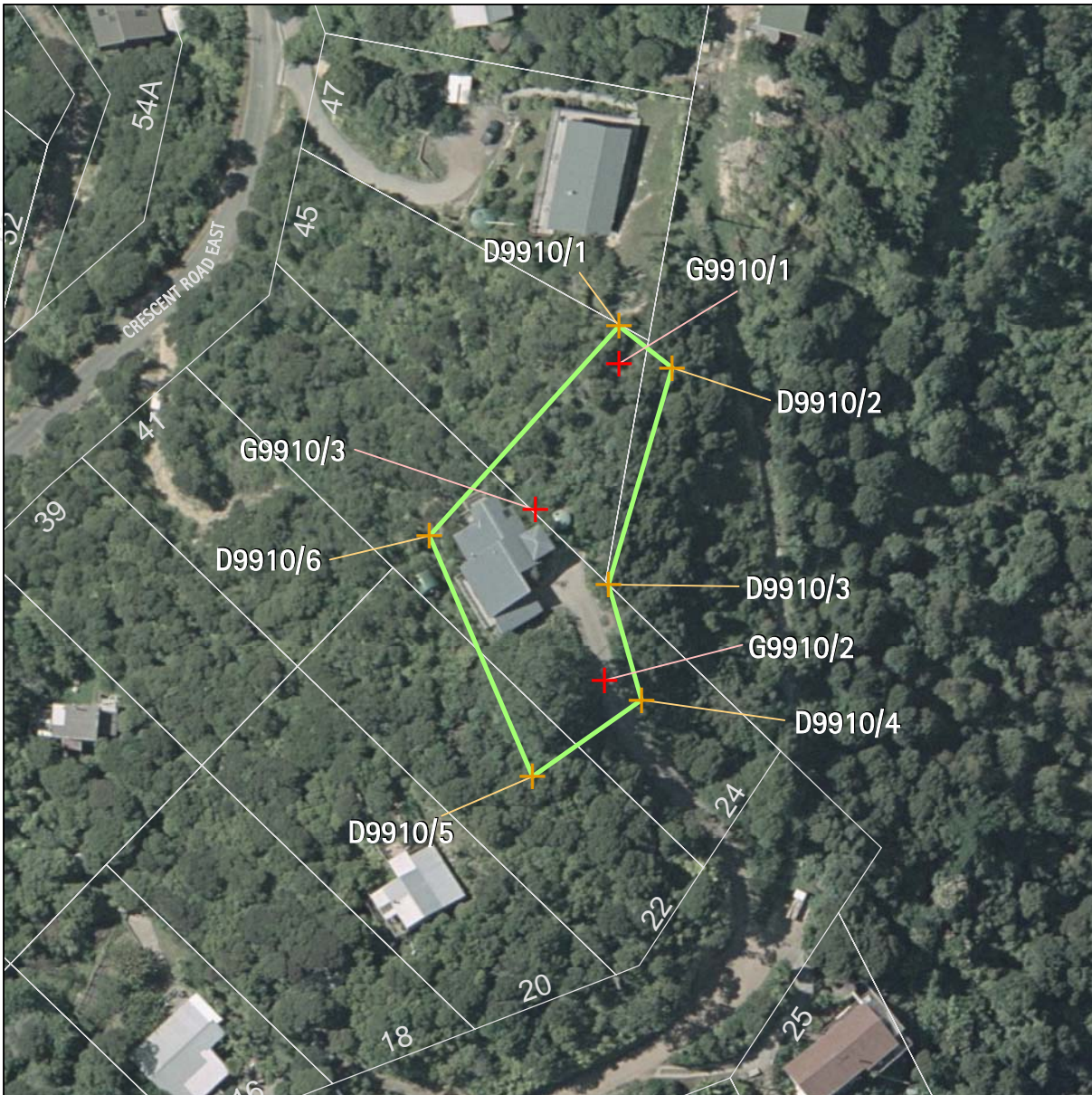


Appendix 1a – Schedule of archaeological sites – inner islands



| | | | | | |
|---|--|--|--|-----------------------------|-----------------------|
| Archaeology | | Name of item: S11/0830 | | Map reference: 10-6 | |
| UID:9910 Island:Waiheke | Management group type: Archaeological Earthworks - Small Scale | Description of item: Dendrogllyph (1) Midden (1) Pit (2) Terrace (2) | Surrounds protected:N | Reasons: A,B,c,D,f,g,H,I | Category: A |
| GPS points (NZMG) | | | Digitised points (NZMG) | | |
| 1) G9910/1 E2693585.35, N6488391.45 2) G9910/2 E2693583.21, N6488345.21 3) G9910/3 E2693573.16, N6488370.11 | | | 1) D9910/1 E2693585.33, N6488397.01 2) D9910/2 E2693593.15, N6488390.91 3) D9910/3 E2693583.82, N6488359.21 4) D9910/4 E2693588.67, N6488342.34 5) D9910/5 E2693572.68, N6488331.21 6) D9910/6 E2693557.61, N6488366.31 | | |

[Refer to the disclaimer at the beginning of this appendix](#)

[Click here for Legend](#)