



Appendix 1a

Schedule of archaeological sites - inner islands

Contents	Page
1.0 Introduction	3
2.0 Key to reasons for scheduling archaeological sites	3
3.0 Notes and disclaimers	4
4.0 Diagrams of scheduled archaeological sites	5
5.0 Diagrams of grouped surrounds for scheduled archaeological sites	139
6.0 Scheduled archaeological sites on Browns Island, Motuihe and Motutapu	161

Plan modification annotations

-  indicates where content is affected by proposed plan modification x. refer to plan modification folder or website for details.
-  indicates where the content is part of plan modification x, which is subject to appeal.
- Underlined content to be inserted.
- ~~Struck through~~ content to be deleted.

1.0 Introduction

This appendix contains key information about scheduled archaeological sites. In particular it identifies:

- The location of scheduled sites, including the site surrounds.
- The category (A or B) applying to each site.
- The reasons for scheduling each site.

Scheduled archaeological sites are shown on the planning maps. [Part 7 - Heritage](#) contains the objectives, policies and rules applying to such sites.

[Section 4.0](#) of this appendix contains diagrams of the scheduled sites. Some sites have been grouped within a common site surrounds. Those site surrounds diagrams are contained in [section 5.0](#).

The diagrams in sections 4.0 and 5.0 are ordered according to their planning map reference number.

[Section 6.0](#) lists scheduled sites on Browns Island, Motuihe and Motutapu.

2.0 Key to reasons for scheduling archaeological sites

Each diagram includes a record of the reasons for scheduling the particular site. The reasons relate to the criteria identified in [appendix 4 - Criteria for scheduling heritage items](#). The list of reasons for scheduling archaeological sites are as follows:

Letter	Reason
A/a	Gaining information and knowledge archaeologically
B/b	Representative example
C/c	Diversity
D/d	Rarity
E/e	Group
F/f	Visual contribution to landscape
G/g	Setting
H/h	Intactness
I/i	Education and interpretation value
J/j	Community association with or public esteem for
K/k	Early period
L/l	People
M/m	Event
N/n	Archaeological / science history
O/o	Architectural value
P/p	Technical accomplishment or value

The reasons are identified on each diagram in the following manner:

1. A capital letter (eg A, D, O) means that the scheduled site scored significantly (ie above the median) for this criteria.
2. A lower case letter (eg a, d, o) means that the scheduled site has scored moderately (ie below the median) for this criteria.

3. Where a letter is omitted, the scheduled site has not scored against this criteria.

Further information about the criteria for scheduling archaeological sites is contained in [appendix 4](#).

3.0 Notes and disclaimers

The New Zealand Historic Places Trust

This appendix of archaeological sites scheduled by the council is not the same as those of the New Zealand Historic Places Trust listed in The Register of Historic Places, Historic Areas, Wahi Tapu and Wahi Tapu Areas. It is a separate but parallel protection process. The scheduled sites in this appendix are in response to the requirements of the RMA. The Register of Historic Places, Historic Areas, Wahi Tapu and Wahi Tapu Areas is in response to the Historic Places Act 1993. Since a heritage place may appear in either or both lists, care should be taken to find out and fulfil any obligations arising from the place being included in either or both lists. All archaeological sites in New Zealand are protected under the Historic Places Act 1993, whether scheduled or not, and any activity which proposes to damage, destroy or modify any archaeological site must be granted authority by the New Zealand Historic Places Trust.

The New Zealand Archaeological Association

All known archaeological sites in New Zealand are recorded by a New Zealand Archaeological Association (NZAA) file keeper. The NZAA is not a regulatory body. Protection is given to all archaeological sites in New Zealand whether recorded or not recorded, by the New Zealand Historic Places Trust as required by the Historic Places Act 1993.

Disclaimer for all diagrams in appendix 1a

The scheduled sites are defined by latitude and longitude coordinates. The polygon, shown on the diagrams as a green outline, is defined by the coordinates provided and forms the definitive identity and location of the scheduled site, with all other identifying information (address etc) being supplementary

Some diagrams may include parts of a site extending below mean high water springs (MHWS). Areas below MHWS fall within the jurisdiction of the Auckland Regional Council, and are therefore outside the jurisdiction of this Plan. Any areas below MHWS are indicative and shown for information purposes only.

4.0 Diagrams of scheduled archaeological sites

Legend



Boundary of scheduled item



Boundary of scheduled site surrounds



GPS point - coordinates recorded by global positioning system (GPS) in the field



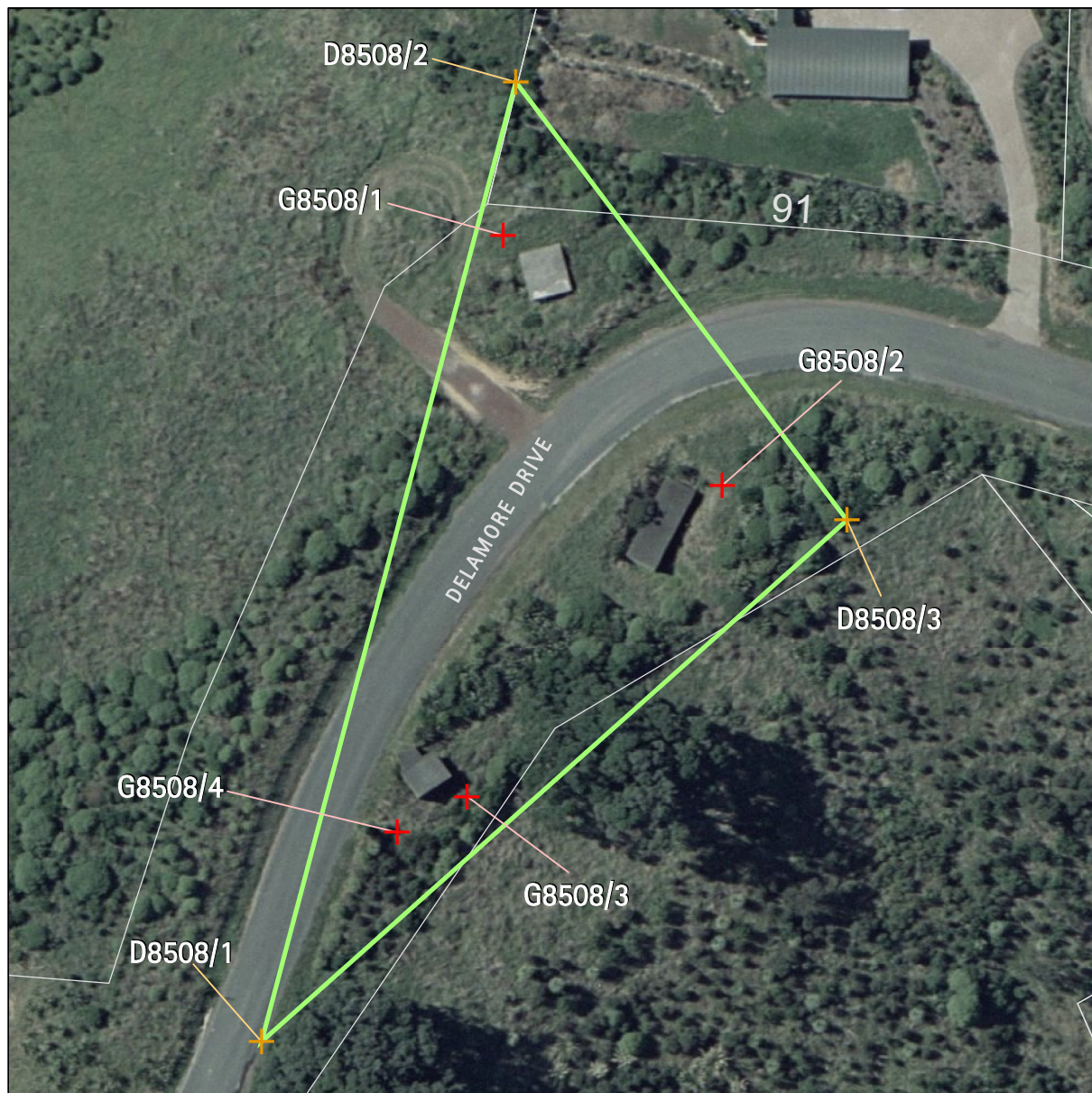
Digitised point - coordinates derived from the NZMG (New Zealand Map Grid) base where recording of a GPS position was not possible



Archaeology	Name of item: R11/NEW ROPATA ROA		Map reference: 1-3
UID:8013 Island:Waiheke Management group type: Burials	Description of item: Cemetery (1)	Surrounds protected:N Other identifying information: Fenced historic grave of Ropata Roa.	Reasons: a,B,d,F,g,H,I,J,I Category: A
GPS points (NZMG)		Digitised points (NZMG)	
1) G8013/1 E2688300.15, N6489178.93 2) G8013/2 E2688297.68, N6489177.95		1) D8013/1 E2688295.88, N6489180.78 2) D8013/2 E2688301.54, N6489180.54 3) D8013/3 E2688301.49, N6489175.69 4) D8013/4 E2688295.73, N6489175.97	

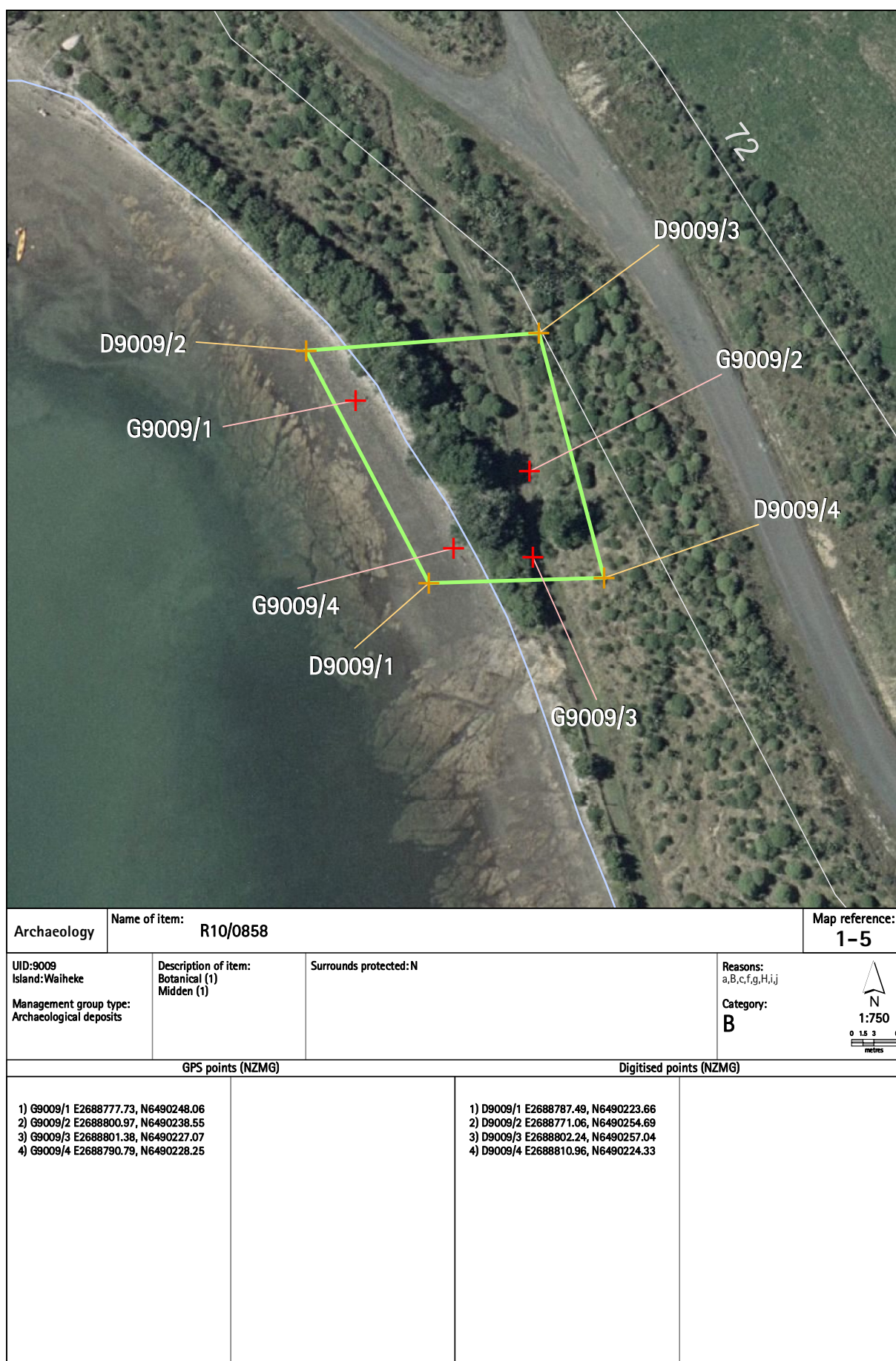
Refer to the disclaimer at the beginning of this appendix.

Appendix 1a - Schedule of archaeological sites - inner islands



Archaeology	Name of item: R11/1646			Map reference: 1-4
UID: 8508 Island: Waiheke Management group type: Buildings / Structures	Description of item: Building/Building site (3)	Surrounds protected: N Other identifying information: Matiatia Observation Post.	Reasons: A, B, c, d, F, g, H, I, j Category: A	
GPS points (NZMG)		Digitised points (NZMG)		
1) G8508/1 E2688539.49, N6489612.71 2) G8508/2 E2688563.6, N6489585.2 3) G8508/3 E2688535.58, N6489551.04 4) G8508/4 E2688527.85, N6489547.05		1) D8508/1 E2688512.96, N6489524.07 2) D8508/2 E2688540.88, N6489629.52 3) D8508/3 E2688577.28, N6489581.41		

Refer to the disclaimer at the beginning of this appendix.



Refer to the disclaimer at the beginning of this appendix.

Appendix 1a - Schedule of archaeological sites - inner islands



Archaeology	Name of item: R11/0206		Map reference: 1-6
UID:9194 Island:Waiheke Management group type: Archaeological Earthworks - Small Scale	Description of item: Platform (1) Terrace (5)	Surrounds protected:Y Surrounds definition map reference: 1-12	Reasons: a,b,c,e,F,g,H,I Category: B
GPS points (NZMG)		Digitised points (NZMG)	
1) G9194/1 E2687618.82, N6489555.55 2) G9194/2 E2687591.48, N6489540.99		1) D9194/1 E2687619.95, N6489569.48 2) D9194/2 E2687634.63, N6489552.53 3) D9194/3 E2687620.99, N6489502.60 4) D9194/4 E2687600.81, N6489497.72 5) D9194/5 E2687567.10, N6489507.86 6) D9194/6 E2687566.78, N6489554.55 7) D9194/7 E2687587.09, N6489566.83	

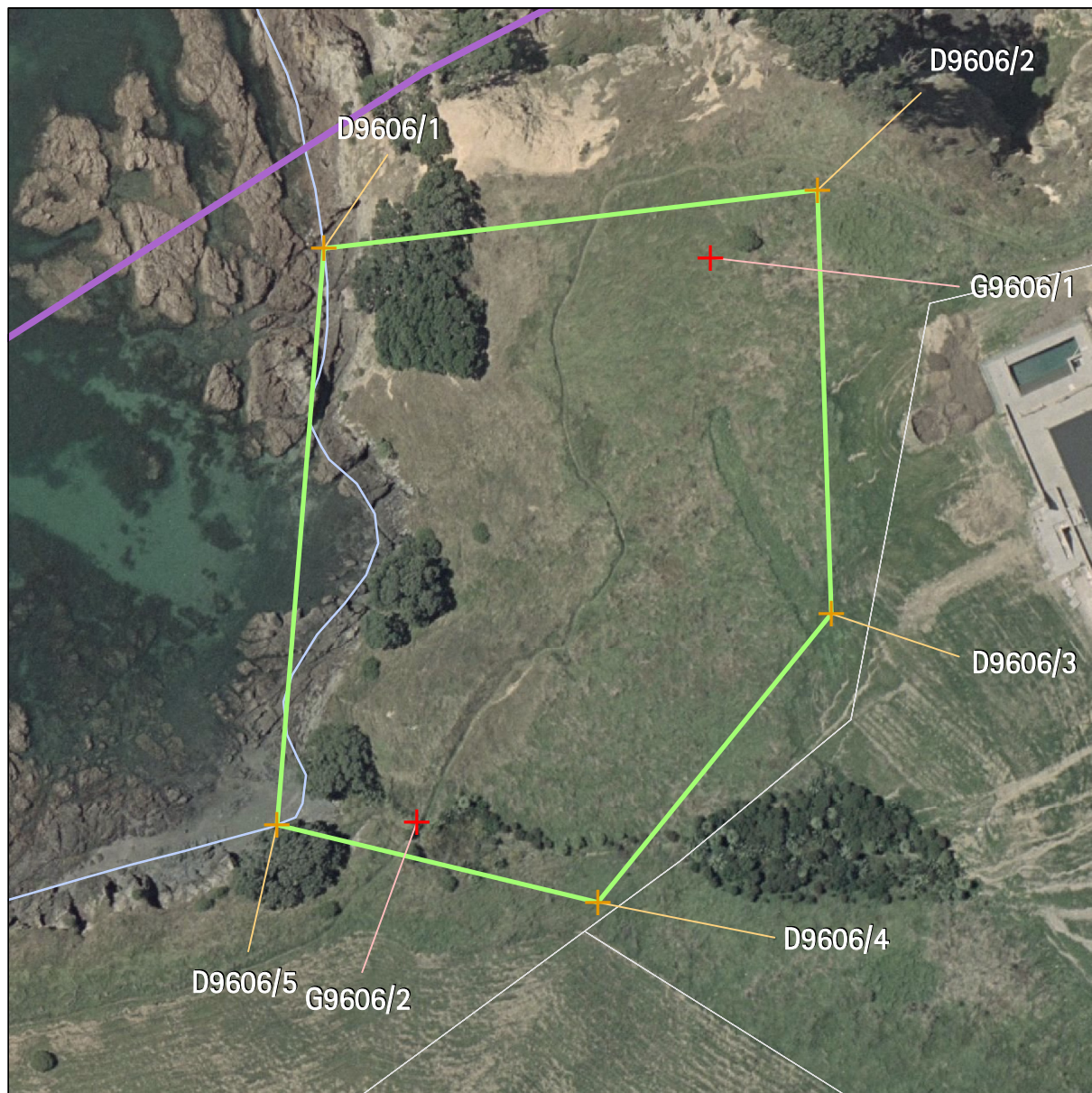
Refer to the disclaimer at the beginning of this appendix.



Archaeology		Name of item: R11/0204		Map reference: 1-7	
UID:9195 Island:Waiheke Management group type: Archaeological Earthworks - Large Scale		Description of item: Ditch (1) Pa (1) Pit (27) Terrace (11)	Surrounds protected:Y Surrounds definition map reference: 1-12 Other identifying information: Mokemoke Pa.		Reasons: A,B,C,d,e,F,G,H,I,j,o Category: A
GPS points (NZMG)			Digitised points (NZMG)		
1) G9195/1 E2687718.7, N6489482.65 2) G9195/2 E2687699.32, N6489424.07 3) G9195/3 E2687653.92, N6489403.36 4) G9195/4 E2687634.22, N6489336.64 5) G9195/5 E2687648.3, N6489413.31 6) G9195/6 E2687689.52, N6489433.18				1) D9195/1 E2687632.50, N6489426.88 2) D9195/2 E2687634.87, N6489441.90 3) D9195/3 E2687681.67, N6489439.48 4) D9195/4 E2687705.29, N6489496.84 5) D9195/5 E2687738.21, N6489483.02 6) D9195/6 E2687709.04, N6489417.67 7) D9195/7 E2687713.09, N6489381.87 8) D9195/8 E2687663.15, N6489391.41 9) D9195/9 E2687648.63, N6489325.38 10) D9195/10 E2687641.69, N6489319.76 11) D9195/11 E2687627.15, N6489325.82 12) D9195/12 E2687598.38, N6489370.00 13) D9195/13 E2687591.75, N6489402.38 14) D9195/14 E2687611.75, N6489419.13	

Refer to the disclaimer at the beginning of this appendix.

Appendix 1a - Schedule of archaeological sites - inner islands



Archaeology	Name of item: R10/0690		Map reference: 1-8
UID:9606 Island:Waiheke Management group type: Archaeological Earthworks - Small Scale	Description of item: Gardens (6)	Surrounds protected:Y Surrounds definition map reference: 1-13	Reasons: a,b,c,D,e,f,g,h,i,j Category: B
GPS points (NZMG)		Digitised points (NZMG)	
1) G9606/1 E2687853.14, N6490272.32 2) G9606/2 E2687810.1, N6490189.65		1) D9606/1 E2687796.44, N6490273.68 2) D9606/2 E2687868.81, N6490282.27 3) D9606/3 E2687870.82, N6490220.13 4) D9606/4 E2687836.63, N6490177.86 5) D9606/5 E2687789.61, N6490189.27	

Refer to the disclaimer at the beginning of this appendix.



Archaeology	Name of item: R10/0692		Map reference: 1-9
UID: 9607 Island: Waiheke Management group type: Archaeological Earthworks - Small Scale	Description of item: Gardens (5) Pit (1) Terrace (2)	Surrounds protected: Y Surrounds definition map reference: 1-13	Reasons: a,B,c,D,e,f,g,H,i,j,n,p Category: A
GPS points (NZMG)		Digitised points (NZMG)	
1) G9607/1 E2687807.02, N6490186.91 2) G9607/2 E2687821.61, N6490089.15		1) D9607/1 E2687810.69, N6490200.55 2) D9607/2 E2687879.92, N6490146.41 3) D9607/3 E2687818.65, N6490073.56 4) D9607/4 E2687748.35, N6490131.26	

Refer to the disclaimer at the beginning of this appendix.

Appendix 1a - Schedule of archaeological sites - inner islands



Archaeology		Name of item: R10/0687		Map reference: 1-10
UID:9614 Island: Waiheke Management group type: Archaeological Earthworks - Large Scale	Description of item: Ditch (1) Pa (1) Pit (9) Terrace (4)	Surrounds protected: Y Surrounds definition map reference: 1-13 Other identifying information: Owhanake Bay Pa.	Reasons: A,b,C,d,e,F,G,H,I,J,I,m,n,p Category: A	
GPS points (NZMG)		Digitised points (NZMG)		
1) G9614/1 E2687918.56, N6490333.57 2) G9614/2 E2687970.28, N6490300.12 3) G9614/3 E2687941.79, N6490293.03 4) G9614/4 E2687932.84, N6490298.96		1) D9614/1 E2687913.91, N6490338.82 2) D9614/2 E2687917.57, N6490343.48 3) D9614/3 E2687979.39, N6490299.77 4) D9614/4 E2687949.15, N6490280.49 5) D9614/5 E2687924.05, N6490300.26		

Refer to the disclaimer at the beginning of this appendix.



Archaeology	Name of item: R10/0086		Map reference: 1-11
UID: 9615 Island: Waiheke Management group type: Archaeological deposits	Description of item: Midden (1)	Surrounds protected: N	Reasons: A, B, C, F, g, H, i Category: B
GPS points (NZMG)		Digitised points (NZMG)	
1) G9615/1 E2688721.41, N6490290.89 2) G9615/2 E2688709.52, N6490275.49		1) D9615/1 E2688730.83, N6490290.20 2) D9615/2 E2688718.30, N6490284.26 3) D9615/3 E2688707.65, N6490271.82 4) D9615/4 E2688703.26, N6490275.63 5) D9615/5 E2688721.15, N6490298.25	

Refer to the disclaimer at the beginning of this appendix.

Appendix 1a - Schedule of archaeological sites - inner islands



Archaeology	Name of item: S10/0008		Map reference: 2-4
UID: 8783 Island: Waiheke Management group type: Archaeological Earthworks - Large Scale	Description of item: Ditch (2) House Floor (1) Midden (1) Pa (1) Pit (6) Terrace (23)	Surrounds protected: N Other identifying information: Hakaimango headland pa.	Reasons: A, B, C, D, F, G, H, I, p Category: A
GPS points (NZMG)		Digitised points (NZMG)	
		1) D8783/1 E2690221.70, N6490544.35 2) D8783/2 E2690236.25, N6490544.25 3) D8783/3 E2690261.63, N6490543.50 4) D8783/4 E2690269.00, N6490512.00 5) D8783/5 E2690232.07, N6490454.73 6) D8783/6 E2690198.38, N6490342.00 7) D8783/7 E2690281.69, N6490247.14 8) D8783/8 E2690292.34, N6490228.95 9) D8783/9 E2690277.71, N6490211.60 10) D8783/10 E2690178.63, N6490220.38 11) D8783/11 E2690125.85, N6490250.19 12) D8783/12 E2690176.25, N6490478.00	

Refer to the disclaimer at the beginning of this appendix.