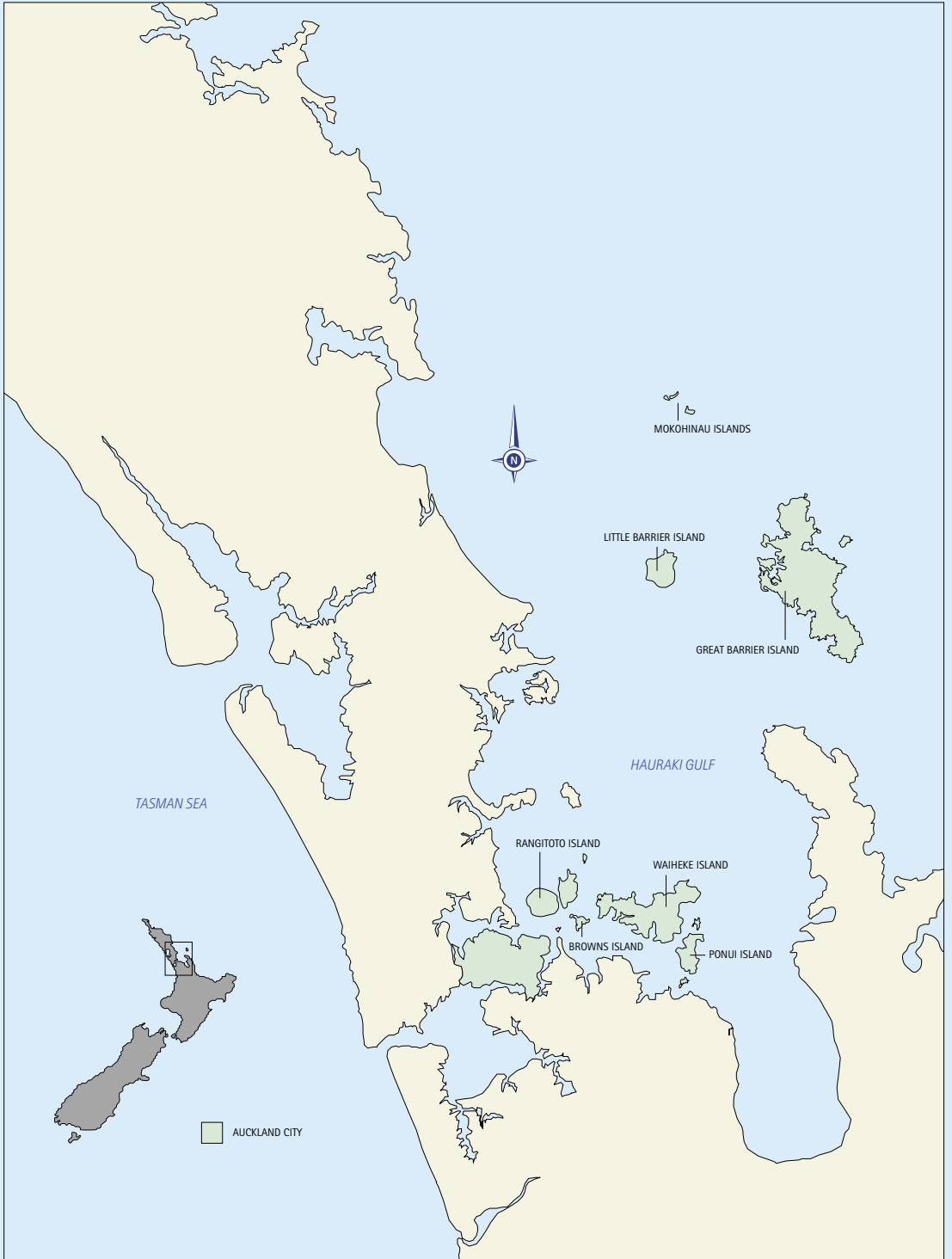




Caring for one of Auckland's greatest treasures

→ Hauraki Gulf islands **strategic plan**





AUCKLAND CITY
HAURAKI GULF ISLANDS

FACTS ABOUT THE HAURAKI GULF

Islands	65
Land area	50,089ha
Population	8268 people in 3756 households
Waiheke Island	7137 people in 3231 households
Great Barrier Island	1017 people in 459 households
Other	105 people in 51 households
Population increase since 1996	8.7 per cent
Businesses	726

CONTENTS

- Introduction 3
- Planning our living environment 5
- Protecting our natural environment 7
- Recreation 9
- Community 10
- Transport 11
- Business 13
- Leadership 15
- Hauraki Gulf islands and you 17
- More information 18



Introduction

INTRODUCTION

The Hauraki Gulf islands offer diverse lifestyles, visitor destinations, and business and recreational opportunities in superb natural settings. They also make up a significant area of Auckland – 74 per cent of the city's land area.

The issues and challenges that arise in the islands differ from those in the rest of Auckland. Some are the result of the islands' geographic isolation while others are due to their proximity to Auckland.

The greatest challenge is conservation of the islands' natural environments and unique lifestyles – at the same time as catering for increasing numbers of visitors.

Auckland City's response to this challenge has been to listen to what the people of the gulf say they want for their communities and to adopt a holistic approach to planning and management. As a result, its organisational structure, planning documents, programmes and actions all identify, plan and manage issues in a cooperative and integrated way.

Like the island communities, Auckland City's aim is that the Hauraki Gulf islands are protected, understood and enjoyed forever.



Planning our living environment

People who live on and visit the Hauraki Gulf islands do so because they appreciate the natural environment, access to clean beaches and bush, the villages and lifestyles.

WE ARE

- protecting the lifestyle and natural environment by planning for and managing new developments so they have adequate on-site water supply, wastewater disposal and access to community facilities and transport
- directing development to existing villages on Waiheke rather than allowing it to encroach onto rural and coastal land but allowing dispersed, low-intensity development to continue on Great Barrier Island, where growth pressures are not so great
- encouraging low impact development and infrastructure – wastewater, water, energy and telecommunications – that protect and respect the environment
- continuing to involve the islands' communities in planning, so that people can be proud of the place they live and understand how and where future development will take place
- providing environmental health services, so that residents can be confident their neighbourhoods and businesses remain clean, healthy and safe
- providing domestic refuse and recycling collections, as well as public litter services.

WE'VE ALREADY

- introduced the Waiheke wastewater management plan
- conducted a voluntary property inspection of septic tank fields introduced a bylaw requiring septic tanks to be pumped out every three years
- built a small-scale wastewater reticulation and treatment scheme for commercial properties in Oneroa
- identified septic disposal sites for Great Barrier Island, aimed at protecting residents from the potentially high cost of disposing of wastewater off the island
- developed the Essentially Waiheke and Rakino Way community development strategies for Waiheke and Rakino islands
- developed, with community input, a Hauraki Gulf islands waste management plan



Protecting our natural environment

The Hauraki Gulf and its islands include unique ecosystems that are of regional, national and increasing international significance. On the one hand, our policies are aimed at ensuring the survival of this environment, and on the other at allowing people to access, enjoy and learn from it.

WE ARE

- protecting and restoring publicly owned areas, to create a variety of environments – coastal, bush, wetland and farmland – for people to learn from and enjoy
- undertaking a review of the Hauraki Gulf islands section of the district plan, to guarantee an appropriate balance between development and protecting the natural environment
- completing an ecological survey of Waiheke Island
- completing a heritage study of the Hauraki Gulf islands, in order to protect important historical and cultural sites and features
- achieving high standards of water quality by lessening the effects of earthworks, vegetation removal and inappropriate development on the Auckland isthmus as well as the islands
- managing noxious weeds and pests, in partnership with the Auckland Regional Council and Department of Conservation
- promoting recognition of the Hauraki Gulf as a marine park and supporting the creation of protected areas
- encouraging private owners to protect important natural areas on their land
- helping people to understand the unique features of the gulf environment through education and promotion.

WE'VE ALREADY

- completed management plans for most of the reserve and park areas on Waiheke Island
- supported the creation of a marine reserve at Te Matuku Bay
- begun regular monitoring of water quality in some streams, waterways and seas off Hauraki Gulf island beaches.



Recreation

Local communities come together through arts, entertainment, sports and other leisure activities.

The council provides opportunities and facilities for people to take part in those activities safely and easily, to enhance life on the islands.

WE ARE

- maintaining parks, open spaces and facilities that make a range of casual and organised outdoor activities possible including sports fields, boat ramps and playgrounds
- developing facilities for indoor leisure pursuits including the Waiheke Recreation Centre and planning for a community centre on Great Barrier Island
- improving access to and along the islands' coastlines by developing a system of walkways
- involving the local communities in arts, entertainment and culture
- providing a community library on Waiheke Island and a small lending library at the Great Barrier Service Centre

- beginning a process to exchange land with mainly conservation value for land owned by the Department of Conservation that has more of a community nature
- managing the impact on the natural environment of visitors to the islands by providing walkways, toilets and refuse facilities.

WE'VE ALREADY

- established a coastal walkway network on Waiheke Island from Oneroa, through Matiatia to Church Bay and Owhanake Bay as well as new walkways throughout Waiheke, and proposed several new walkways on Great Barrier Island
- provided children's playgrounds on Waiheke and Great Barrier islands
- started planning to build an indoor recreation centre at Waiheke High School in partnership with a local community trust
- set up and run the Sport and Recreation New Zealand Fund (SPARC)
- set up and run the Creative Communities grants system
- created and maintained the Onetangi Sports Park, which is made up of three all-weather playing grounds, four tennis courts, bridle trails, picnic and barbecue areas and a sports pavilion.



Community

We recognise how important the sense of belonging to the local community is to people who live in the Hauraki Gulf.


We also know that residents want access to community facilities and services that meet their needs and lifestyles. That's why providing the right community infrastructure is as important as providing the right physical infrastructure.

WE ARE

- providing a network of community facilities that are within easy reach of people
- providing support for local community-based projects and groups
- actively looking for opportunities to work with other agencies or community groups to provide facilities – for example a recreation centre at Waiheke High School will be used by the community as well as the school

- advocating to central government and social service organisations for adequate health, education and social facilities to be provided where they are required.

WE'VE ALREADY

- provided four community halls on Waiheke Island and one on Rakino Island as well as maintaining one on Great Barrier Island
 - helped to fund the operational costs of the Citizens Advice Bureau on Waiheke Island.
- 

Transport



The Hauraki Gulf islands have special transport needs because of their geographic isolation. The gulf transport strategy recognises that transport in the gulf – whether by sea, air or road – must reflect those needs without compromising the environment. It also must be safe, efficient and cost-effective.

WE ARE

- advocating to the Auckland Regional Council to serve residents' public transport needs
- ensuring wharves and airfields are safe, work well and meet the needs of visitors and residents
- improving the roads, many of which began as farm tracks without the benefit of engineering and design
- working towards improving the cycling and walking network so that it is safe and easy to use
- working with ferry operators to ensure services meet the needs of locals and visitors
- providing appropriate car parking to support public transport and businesses, including park-and-ride facilities.

WE'VE ALREADY

- completed resealing work at Claris Airport
- developed a Hauraki Gulf islands wharf management plan
- developed plans for and begun work on a major upgrade of the Matiatia Wharf, and improving parking at the terminal.



Business

The economies of the Hauraki Gulf islands are diversifying. They are moving away from traditional farming and fishing to businesses focused on the visitor industry, grape and olive growing, arts and crafts, and home-based occupations made possible by new technology.

We are keen to see business prosper and are particularly encouraging those that reinforce the village-type settlements and island way of life. We are also encouraging eco-tourism as a way of promoting a sustainable visitor industry.

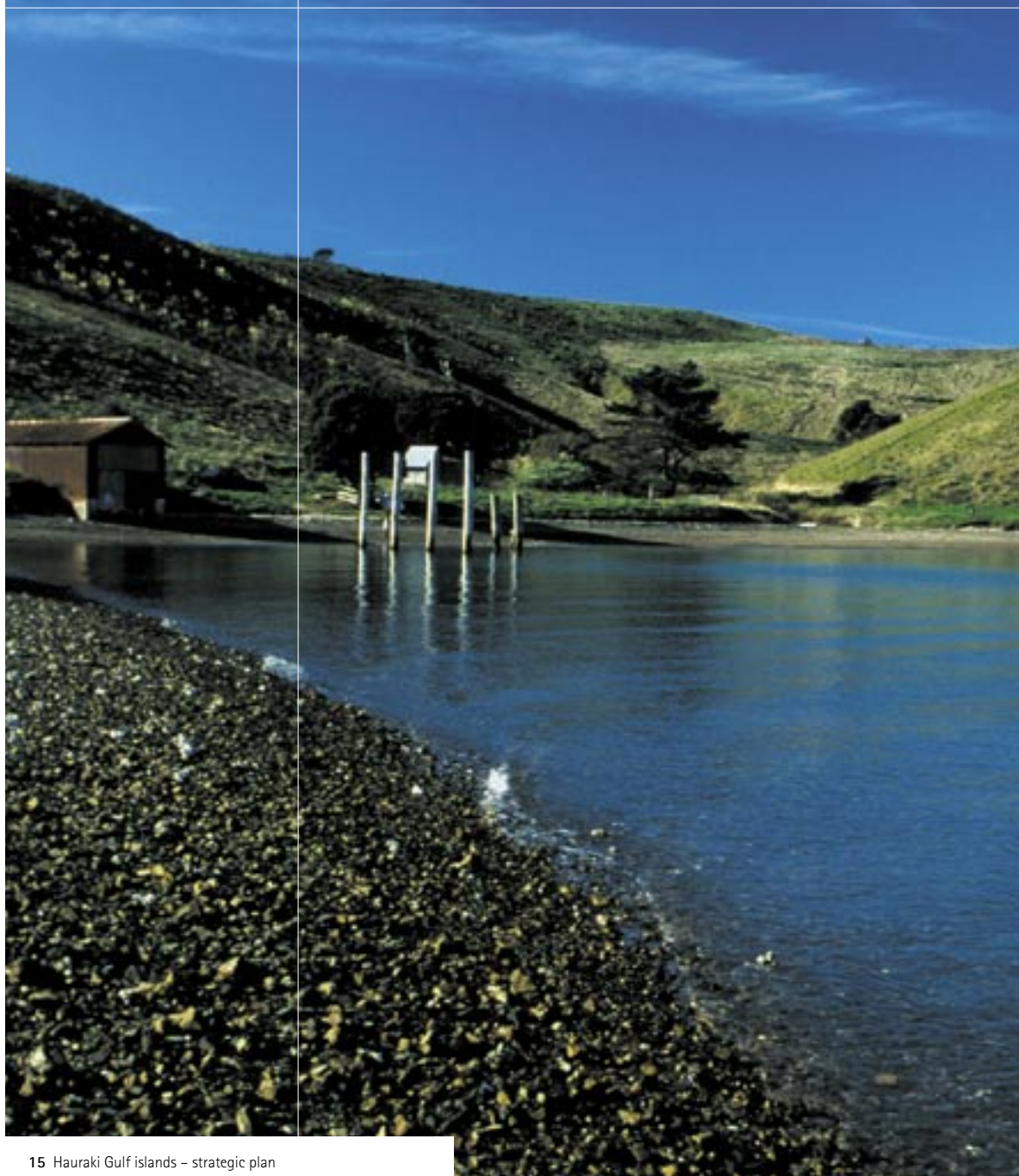
WE ARE

- providing lots of opportunity, through the Hauraki Gulf district plan, for a diverse range of businesses to establish in appropriate locations. These businesses will allow people to work from home and provide for craft and niche industries, agriculture and horticulture
- promoting sustainable tourism for the gulf by encouraging ecotourism ventures
- ensuring businesses continue to benefit from international events in Auckland, long after the events are over
- continuously reviewing the district plan to keep it up to date and relevant as circumstances change in the Gulf islands.

WE'VE ALREADY

- developed a number of publications promoting the gulf, including All About Visiting Great Barrier, All About Visiting Waiheke, Cruising the Gulf and the Waiheke Walkways brochure
- supported events and attractions such as the Waiheke Jazz Festival, the Waiheke Community Theatre and Community Arts Gallery by giving grants, sponsorship and advice
- used our marketing channels such as City Scene to publicise events and activities in the gulf
- developed a series of educational brochures explaining building, planning and environmental health regulations, and how to access our services
- provided a range of e-commerce services over the internet such as rates information.

Leadership



As the local authority responsible for the Hauraki Gulf islands, Auckland City has many roles, some of which are based on statutory requirements. Others are based on historical expectations or community demand.

WE ARE

- working with the elected representatives in the Hauraki Gulf – the ward councillor, and Waiheke and Great Barrier community board members – to ensure the council's direction and vision reflect residents' needs and aspirations
- operating our service centres on Waiheke and Great Barrier islands as one-stop shops for resource and building consents, and other information
- working with other organisations whose activities affect the Hauraki Gulf islands' communities and environment, to integrate management
- providing rural fire and emergency management services.

WE'VE ALREADY

- reviewed rural fire and civil emergency response capabilities on Great Barrier Island
- provided training and equipment for local council staff and volunteers
- developed processes for consulting with local Iwi in the Hauraki Gulf
- developed a brochure outlining the responsibilities of the Hauraki Gulf Ward councillor and community board members, and how to contact them.

Hauraki Gulf islands and you

The council cannot build a sustainable future for the Hauraki Gulf islands on its own. Everyone has a part to play.

You can get involved by:

- having your say when the council consults the island communities on its annual plan, budget and district plan proposals, and other important issues
- making submissions to the public forum at your local community board meetings
- making submissions on planning applications that may affect you
- reducing refuse through recycling
- attending and supporting local events
- taking part in local community tree plantings.

CONTACT AUCKLAND CITY

- by visiting www.aucklandcity.govt.nz
- or phoning our call centre on 379 2020
- or contact your Hauraki Gulf islands councillor, ph 372 9702.

More information

More information about Auckland City's planning and activities for the Hauraki Gulf islands is available in the documents:

- *Focus on the Future* (which contains the strategic plan, annual plan 2003, long-term financial strategy and funding policy)
- Auckland City consolidated bylaws
- Hauraki Gulf islands section of the district plan
- Essentially Waiheke
- Hauraki Gulf islands strategic overview 2001
- Waiheke Island esplanade areas management guidelines
- Auckland City weed management policy
- Recreation Waiheke
- Recreation Great Barrier
- Gulf transport study
- Waiheke roading strategy
- Cycle and walking strategy
- Matiatia Wharf management plan
- Northern Great Barrier concept plan
- Southern Great Barrier concept plan

These documents may be viewed at your library
or your local Auckland City Service Centre.



