

# AUCKLAND **Regional Policy Statement**

**July 1999**

**ISBN 0-908938-489**



**Auckland  
Regional Council**  
TE RAUHĪTANGA TAIAO



Toitū te marae ō Tāne

Toitū te marae ō Tangaroa

Toitū te Iwi

If the domain of Tāne is sustained

And the domain of Tangaroa sustained

So too will the people be sustained

## **The Resource Management Act 1991**

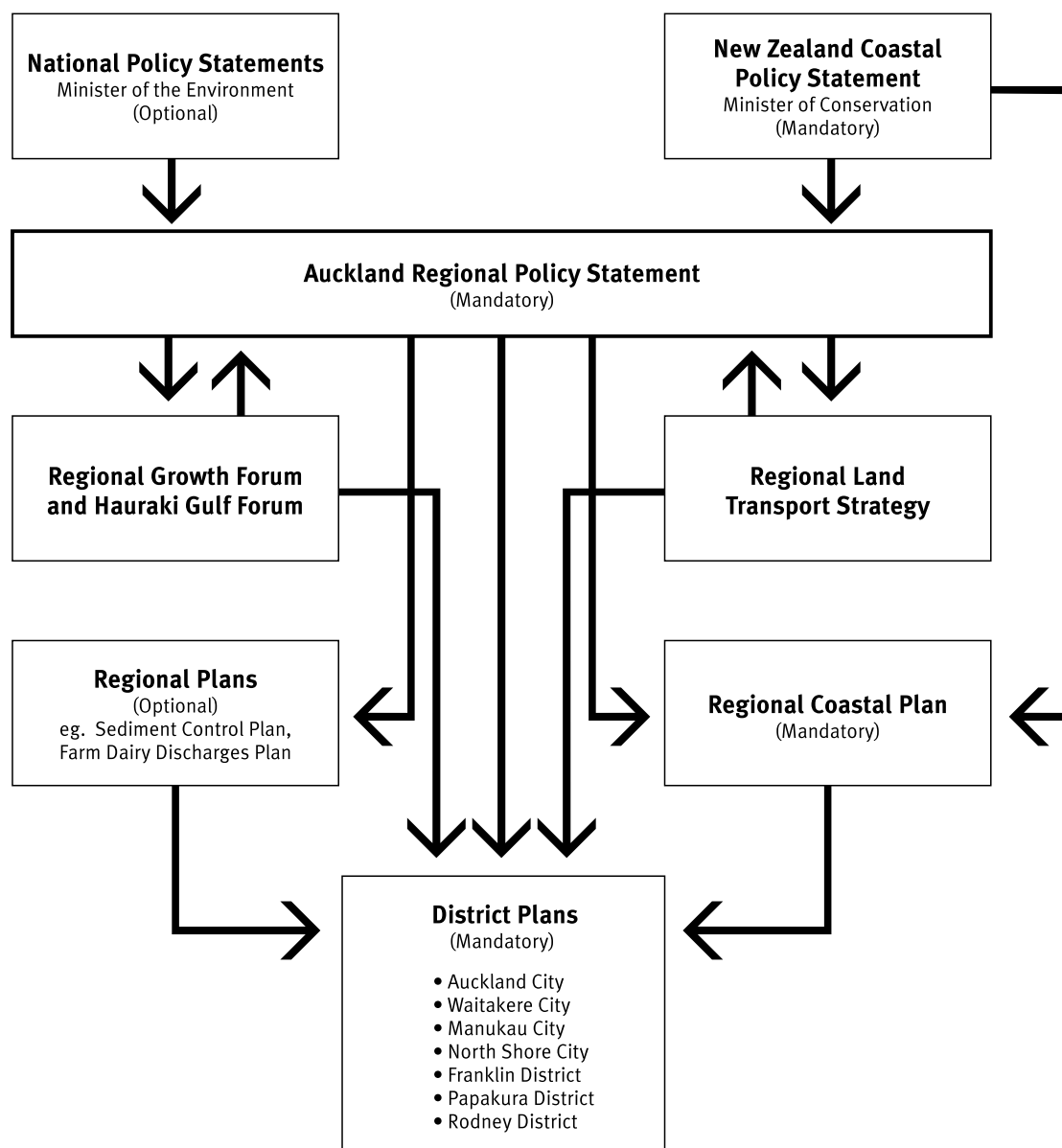
### **Approval of the Auckland Regional Policy Statement**

This Regional Policy Statement has been prepared in the fulfilment of the requirement of the Resource Management Act 1991.

The Auckland Regional Policy Statement is presented in two volumes; a **Policy Volume** and a **Map Volume**.

The Auckland Regional Council approved the Auckland Regional Policy Statement on 16 August 1999 by affixing its seal to the Policy Statement.

The Auckland Regional Policy Statement became operative on **31 August 1999**.



## Policy Statements and Plans in the Auckland Region

The Resource Management Act provides for a relationship between policy statement and plans.

Each of the policy statement and plans must not be inconsistent with any of those at a higher level.

The Auckland Region is New Zealand's largest and fastest growing region. Every five years, we are accommodating the equivalent of a new Dunedin or Hamilton within our boundaries. The region's rich and distinctive natural and physical resources have attracted successive waves of human migration for over 1000 years and now it is home to nearly one in three New Zealanders - and still growing fast.

All this growth places pressure upon our region's environment. Aucklanders value their open spaces, beach and beautiful landscapes. However, the sheer weight of our numbers and demands on these resources, threatens to destroy the every things we cherish.

In 1991, the government recognised that we need to take a co-ordinated and comprehensive approach to managing our environment if we are to care for it sustainably. The Resource Management Act was created to provide an operational framework to allow for integrated and sustainable resource management. The development of regional Policy Statement was seen as cornerstone to achieving this goal.

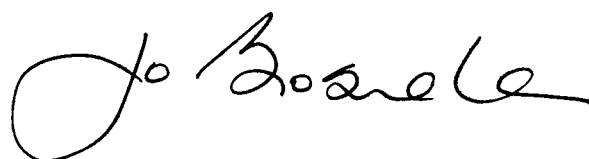
The Regional Policy Statement set out the board resource management issues, objectives and policies for the Auckland Region to Achieve the integrated management of its natural and physical resources. It is a statutory requirement under the Resource Management Act for every region to have a regional policy statement. Under the planning framework set out in the Resource Management Act, Regional Plan and District Plans cannot be inconsistent with a Regional Policy Statement. Therefore, it functions as an umbrella policy document for environment planning and policy development within our region.

The development of the Auckland Regional Policy Statement has required a tremendous effort by both councillors and staff. It was first publicly notified in May 1994. A total of 2523 submissions were received on the draft version and all of these had to be individually analysed and deliberated upon. It has involved the resolution of several complex issues which are unique to the Auckland Region, one of the most important of which has been the definition of the Auckland Metropolitan Urban Limits. It has also been responsible for spawning other important initiatives such as the Auckland Regional Growth and Hauraki Gulf Forums.

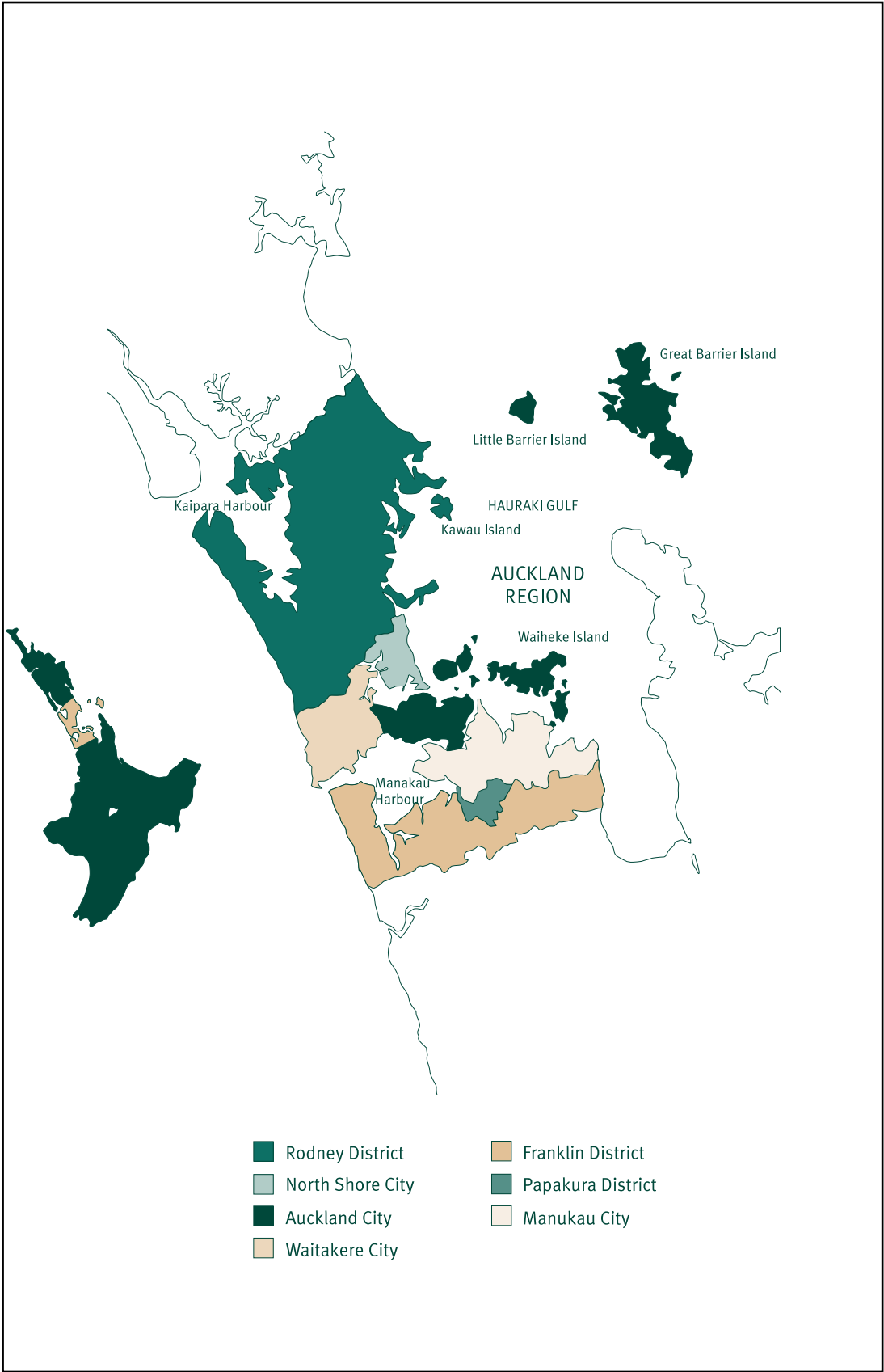
The Regional Policy Statement seeks to maintain a quality environment for the Auckland Region and at the same time, Maintain and enhance opportunities for the region's future growth. This is a challenge which Regional Policy Statement places before us - it is now up to everyone within the region to realise this goal. We commend this document to you as a sustainable pathway for present and future Aucklanders.



Philip Warren, CHAIRMAN



Jo Brosnahan, CHIEF EXECUTIVE



<b>Chapters</b>	1. Introduction	1 - 7
	2. Regional Overview and Strategic Direction	1 - 52
	3. Matters of Significance to Iwi	1 - 7
	4. Transport	1 - 11
	5. Energy	1 - 7
	6. Heritage	1 - 34
	7. Coastal Environment	1 - 18
	8. Water Quality	1 - 18
	9. Water Conservation and Allocation	1 - 10
	10. Air Quality	1 - 12
	11. Natural Hazards	1 - 8
	12. Soil Conservation	1 - 5
	13. Minerals	1 - 4
	14. Pests	1 - 4
	15. Waste	1 - 6
	16. Hazardous Substances	1 - 6
	17. Contaminated Sites	1 - 4
	18. Esplanade Reserves and Strips	1 - 6
<b>Appendix</b>	A. Planning Processes	1 - 9
	B. Significant Natural Heritage Areas and Values	1 - 24
	C. Legislation Dealing with Resource Management	1 - 4
	D. Definitions and Abbreviations	1 - 15
	E. The Treaty of Waitangi	1 - 2
	F. Auckland Regional Landscape Assessment	1 - 2
	G. Local Government (Auckland) Amendment Act 2004	1
	H. Minimum Household and Employment Densities Required in High Density Centres and Intensive Corridors to Support the Public Transport System	1 - 2
	I. Map and Description of Waitakere Ranges Heritage Area	1-2
	J. Integrated Transport Assessments	1
	K. Map of Strategic Network and Regional Arterial Network	1
	L. Volcanic Cone Viewshafts – Surveyed Coordinates	1-13
<b>Schedules</b>	1. High Density Centres and Intensive Corridors 1A & Future Growth Areas 1B	1-4

<b>Figures</b>	1.1	Integration of Statutory Resource Management Instruments, Regional Policy Statements and Plans	Ch 1, p 4
	6.1.	Indigenous Vegetation Cover of the Ecological Districts in the Auckland Region (Percentage of Total Land Area)	Ch 6, p 6
<b>Tables</b>	6.1.	Percentage of Indigenous Vegetation Cover by Ecological District in the Auckland Region Both Current and Pre-European	Ch 6, p 5
	8.1	Water Bodies or Coastal Waters Susceptible to Water Quality and/or with Special Values	Ch 8, p 18
	8.2.	Water Bodies or Coastal Waters with Significantly Degraded Water Quality	Ch 8, p 18-
	16.1.	Hazardous Substances — Roles of Agencies	Ch 16, p 5-