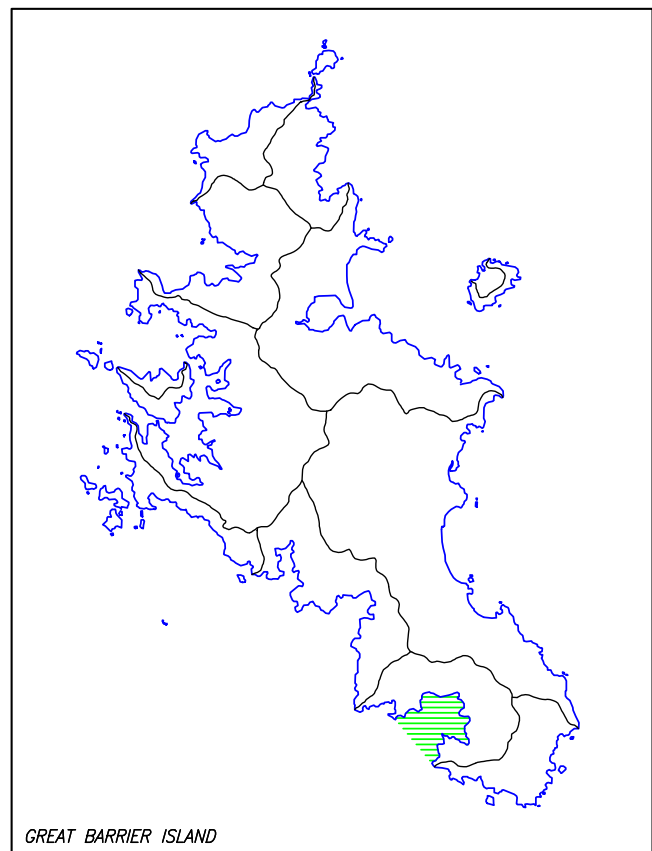
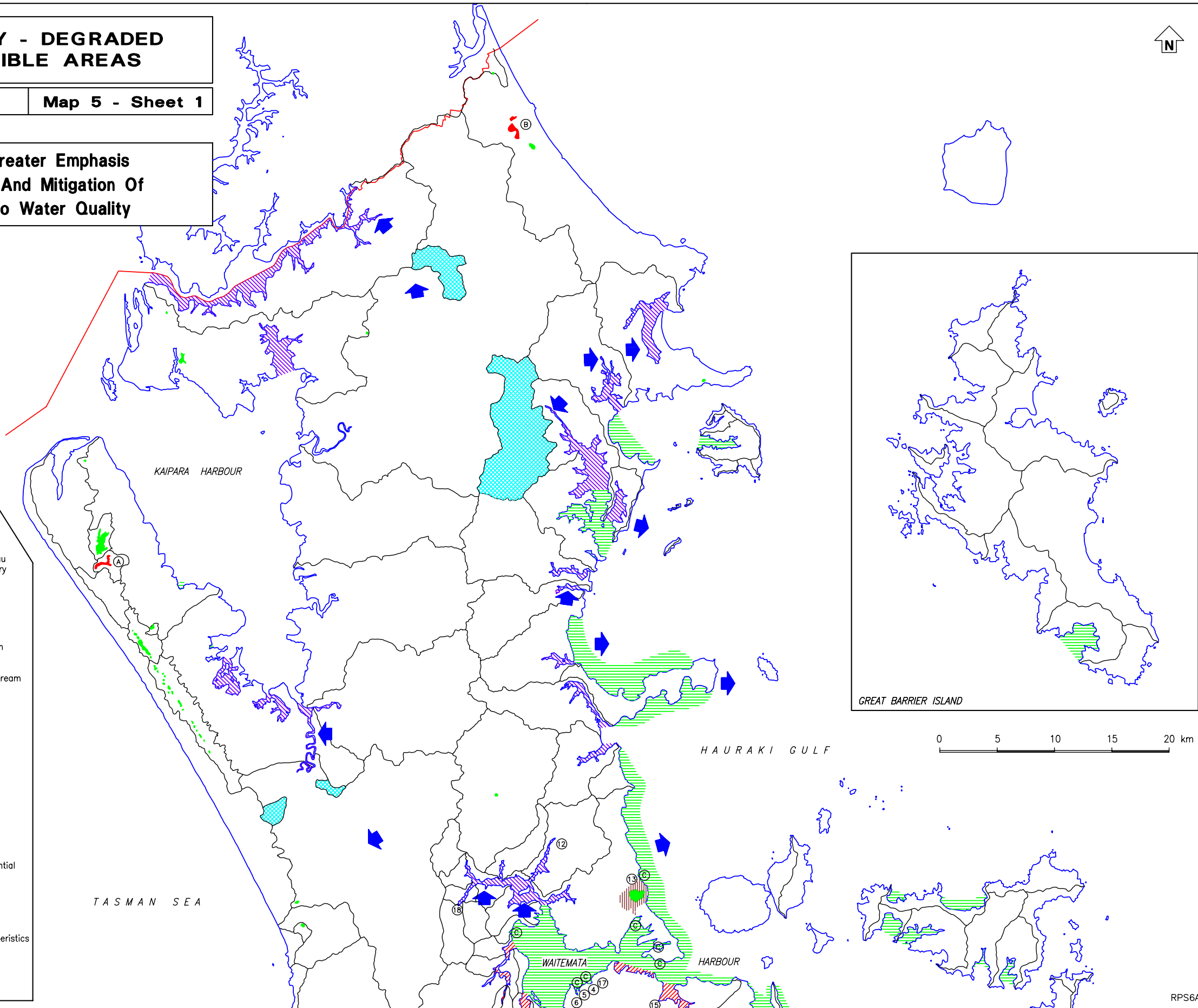


WATER QUALITY - DEGRADED AND SUSCEPTIBLE AREAS

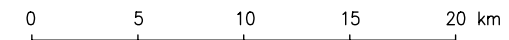
NORTHERN REGION

Map 5 - Sheet 1

Areas Requiring Greater Emphasis
For The Avoidance And Mitigation Of
Adverse Effects To Water Quality



GREAT BARRIER ISLAND



LEGEND

AREAS OF KNOWN DEGRADATION *

- Coastal and estuarine areas of the Manukau and Waitemata Harbours and Tamaki Estuary
- Lake Kuwakatai
- Spectacle and Slipper Lakes
- Areas of localised sediment contamination

Degraded Urban Streams:

- | | |
|-----------------------------------|-----------------------|
| Annes Creek | Puhinui Stream |
| Southdown Stream | Ota Creek |
| Omaru Creek | Greenmount Stream |
| Cox's Creek | Oteha Stream |
| Motions Creek | Wairau Creek |
| Meola Creek | Lower Papakura Stream |
| Otahuhu Creek | Newmarket Gully |
| Creek cnr Bowden and Carbine Road | Glendowie Stream |
| Edgars Creek | |

Degraded Rural Streams:

- Ngongetepara Stream
- Hays Stream
- Whangapouri Stream
- Upper Otara Stream

* Water and/or Sediment

Aquifers

AREAS SUSCEPTIBLE TO DEGRADATION

(Proximity to potential sources of contamination)

- Aquifers recharged from degraded aquifers
- Aquifers of high permeability close to potential sources of contamination
- Surface waters used for potable water supply
- Areas susceptible to degradation because of poor tidal flushing characteristics
- Indeterminate due to higher flushing characteristics
- Lakes susceptible to eutrophication
- COMMUNITY SEWERAGE SCHEME DISCHARGES