

# WATER QUALITY - DEGRADED AND SUSCEPTIBLE AREAS

SOUTHERN REGION

Map 5 - Sheet 2

Areas Requiring Greater Emphasis  
For The Avoidance And Mitigation Of  
Adverse Effects To Water Quality

**LEGEND**

**AREAS OF KNOWN DEGRADATION \***

- Coastal and estuarine areas of the Manukau and Waitemata Harbours and Tamaki Estuary
- Lake Kuwakatai
- Spectacle and Slipper Lakes
- Areas of localised sediment contamination

**Degraded Urban Streams:**

① Annes Creek	⑩ Puhinui Stream
② Southdown Stream	⑪ Otara Creek
③ Omaru Creek	⑫ Greenmount Stream
④ Cox's Creek	⑬ Oteha Stream
⑤ Motions Creek	⑭ Wairau Creek
⑥ Meola Creek	⑮ Lower Papakura Stream
⑦ Otahuhu Creek	⑯ Newmarket Gully
⑧ Creek cnr Bowden and Carbine Road	⑰ Glendowie Stream
⑨ Edgars Creek	

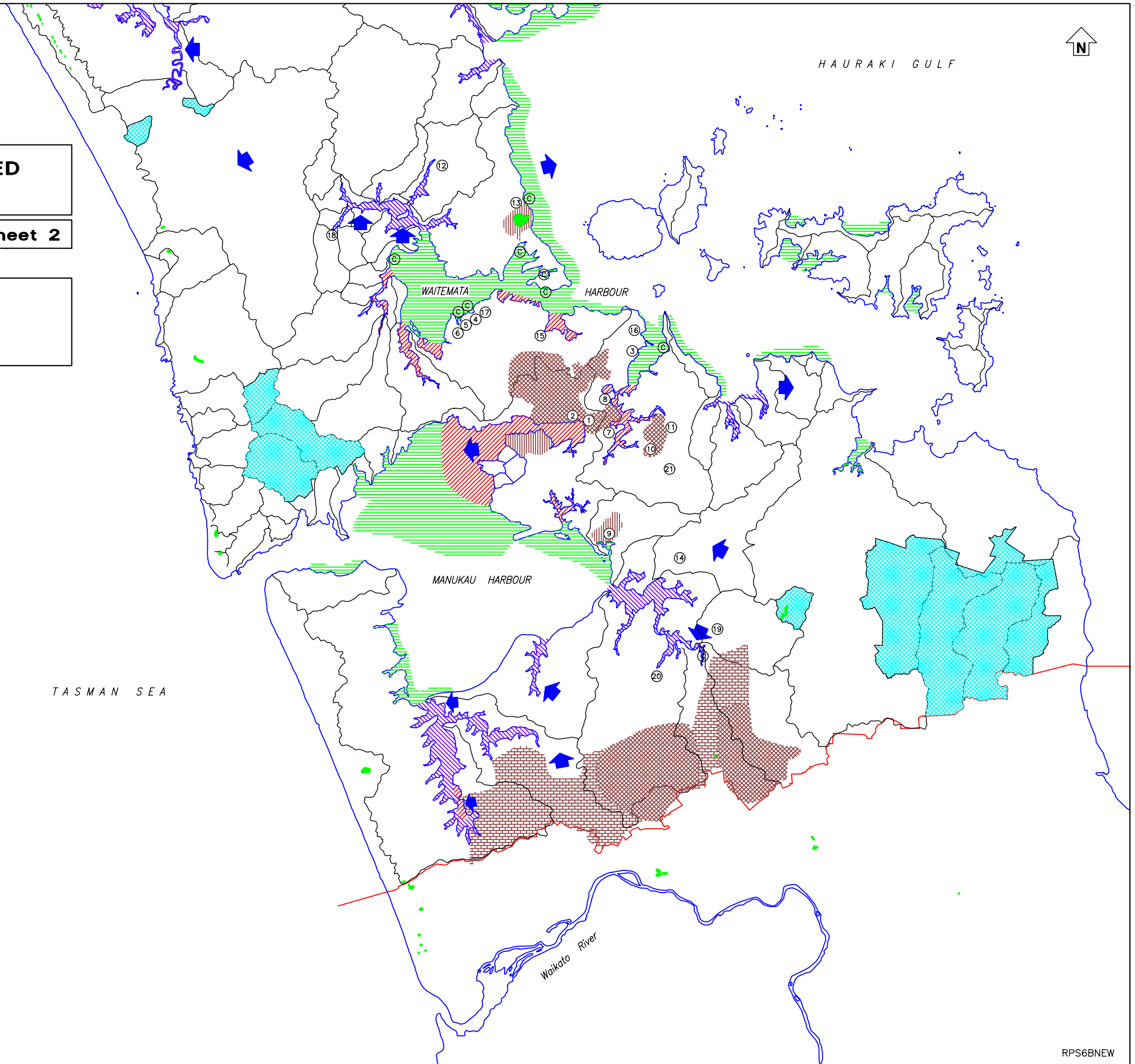
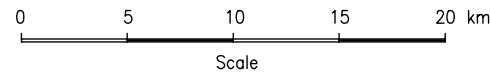
**Degraded Rural Streams:**

- ⑱ Ngongetepara Stream
- ⑲ Hays Stream
- ⑳ Whangapouri Stream
- ㉑ Upper Otara Stream

\* Water and/or Sediment

**AREAS SUSCEPTIBLE TO DEGRADATION**  
(Proximity to potential sources of contamination)

- Aquifers
- Aquifers recharged from degraded aquifers
- Aquifers of high permeability close to potential sources of contamination
- Surface waters used for potable water supply
- Areas susceptible to degradation because of poor tidal flushing characteristics
- Indeterminate due to higher flushing characteristics
- Lakes susceptible to eutrophication
- COMMUNITY SEWERAGE SCHEME DISCHARGES



RPS6BNEW